

使用者說明書

User Manual

TG11

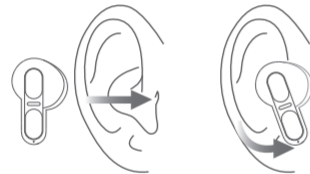
PAPAGO! 研勤科技股份有限公司

ENC降噪 TWS藍牙耳機
Wireless Gaming Earphone

We appreciate you for purchasing the Langsdom Theta Wireless Gaming Earphone, the following instructions will guide you to use it easily.

Wearing

Put the earphone in your ears, rotate and adjust it to the best angle, be sure to wear comfortably and secure fit.



Accessories

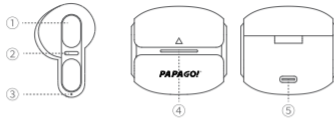


User Manual



Charging Cable

Diagram



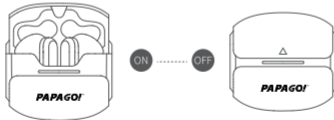
Earphone

- ① Smart touch
- ② LED indicator
- ③ Microphone

Charging box

- ④ LED indicator
- ⑤ Charging port

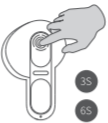
Auto On/ Off



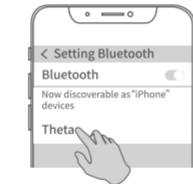
- When the earphone is off, open the charging box, the earphone will power on automatically.
- When the earphone is on, put the earphone into the charging box and close, the earphone will power off automatically.

Manually On/Off

- When the earphone is off, long press the earphone touch area about 3 seconds to power on the earphone.
- When the earphone is on, long press the earphone touch area about 6 seconds to power off the earphone.



Pairing



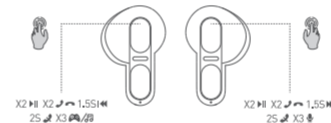
How to pair

When pairing for the first time, please put the earphone into charging box first and keep the distance between earphone and phone within 1m. Open the charging box, the left and right earphone will power on and connect automatically. Turn on phone's Bluetooth function and enter the search pairing state, select "Theta" device to connect.

Auto pairing

- After powering on, the earphone will automatically search for the other one to reconnect and pair itself with the last connected device within 3 minutes, otherwise power off automatically.
- When the earphone is disconnected from the device beyond the effective distance, it will automatically reconnect after returning to the effective distance within 1 minute.

Touch Control



Music Mode

- Play/Pause(L/R) x2
- Long press 1.5s (L): Previous song
- Long press 1.5s (R): Next song
- Voice Assistant (Siri)(R) x3

Call Mode

- Answer/Hang up (L/R) x2
- Long press 2s (L/R): Reject

Dual Modes (Default to be music)

- Switch game mode/ music mode(L)x3

Charging

Charging the earphone

- The earphone's ice blue light is oncharging
 - The earphone's ice blue light is offfully charged
- The earphone is fully charged about 1 hour

Charging the box

- The charging box's ice blue light flashes about 30s and then offcharging
 - The charging box's ice blue light is onfully charged
- The charging box is fully charged about 1.5 hours
- LED indicator shows ice blue light in normal power state and shows red light when power is below 15%.

Warning

- Do not listen for a long time at a high volume to prevent injury to hearing.
- Do not wear earphone while driving, cycling or walking, otherwise it will easily cause traffic accidents.
- The earphone only can be charged with DC5V charger, using a fast charger that more than DC5V or charger with DC5V more than 1.5A will cause overheat or fire.
- Do not expose the earphone to high temperature or expose it to sunlight for a long time.
- The storage temperature of the earphone is 10°C to 30°C.
- The operating ambient temperature for earphone is -20 °C to 60 °C.
- Please fully charge after a long-term placement, and ensure that it is charged every 3 months.

※ It is recommended that new earphone be fully charged before use.

Service

- If any problems, please contact with the related stores, our customer service team will answer your questions about the product using and other after-sales issues.
- Warranty is only covered by the first year of purchase. The intentional damage from users is not included.
- Please contact us with your order number and earphone's photos by e-mail, because it is helpful for us to solve the problems faster, providing you a better product experience.

Product Parameters

EN

Product Name:

ENC noise reduction TWS bluetooth earphone

Model: Theta

BT Version: V5.3

Input Voltage: DC5V

Battery Capacity: 30mAh*2/240mAh

BT Frequency Range: 2.402-2.480GHz

Audio Frequency: 20Hz-20KHz

Drivers Size: Φ13mm

Impedance: 16Ω±15%

Transmission Range: 10m

Sensitivity: 112dB±3dB

Play Time: About 6 hours

Earphone's Charging Time: About 1 hour

Information of Commissioned Manufacturer

Agent / Importer: Seeyou Electronic Co., Ltd

Address: 3F, No.9, Lane 2, Siwei Lane, Zhongzheng Road, Xindian District, New Taipei City

Customer Service Hotline: (02)2219-2696

Fax Hotline: (02)2219-2927

Manufacturing Date: in 2024

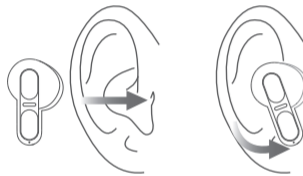
Place Of Manufacture: China

Manufacturer: This product is produced under license from PAPAGO INC.

感謝您購買Theta真無線遊戲耳機，以下說明將引導您輕鬆使用。

配戴

請將耳機配戴好，調整至最佳入耳角度，確保配戴舒適穩固。



配件

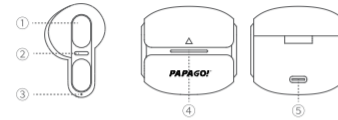


說明書



充電線

示意圖



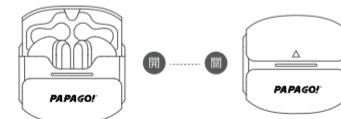
耳機

- ① 觸控區
- ② LED顯示燈
- ③ 麥克風

充電盒

- ④ LED顯示燈
- ⑤ 充電孔

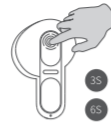
自動開/關機



1. 在關機狀態下，打開充電盒，耳機自動開機。
2. 在開機狀態下，將耳機放入充電盒並蓋上蓋子，耳機自動關機。

手動開/關機

1. 在關機狀態下，長按左右耳機觸控區3秒，耳機開機。
2. 在開機狀態下，長按左右耳機觸控區6秒，耳機關機。



配對



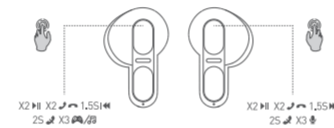
藍牙配對

首次配對時，請先耳機放回充電盒中，將耳機和手機靠近距離在1米範圍內。打開充電盒蓋，左右耳開機並自動連接。開啟手機藍牙，搜尋其他設備，選擇“Theta”耳機並進行手機連接配對即可。

自動回連

1. 耳機開機後約3分鐘內會自動搜尋另一邊耳機回連並自動配對最後一次連接過的設備，否則自動關機。
2. 當耳機與設備超出有效距離斷開連接後，在1分鐘內回到有效距離內，耳機將自動重新連接。

操作說明



音樂模式

雙觸左/右耳機: 播放/暫停
長觸左耳1.5秒: 上一曲
長觸右耳1.5秒: 下一曲
三觸右耳: Siri語音助手

通話模式

雙觸左/右耳機: 接聽/掛斷
長觸左/右耳機2秒: 拒接

雙模式 (開機默認為音樂模式)

三觸左耳機: 切換遊戲模式/音樂模式

充電

耳機充電 (約1小時充滿電)

- 耳機藍燈常亮---耳機充電中
- 耳機藍燈熄滅---耳機充滿電

充電盒充電 (約1.5小時充滿電)

- 充電盒藍燈閃爍30秒後熄滅---充電盒充電中
- 充電盒藍燈常亮---充電盒充滿電

※ 耳機低電量提示:

LED顯示燈在正常電量狀態下顯示藍燈，電量低於15%時(約3.2V)顯示紅燈，並發出“滴滴”的提示音。(約60秒提示一次)

警告

- 請勿長時間聽高音量，防止聽力受損。
- 開車或騎行時請不要配戴耳機，易造成交通事故。
- 該耳機只能用DC5V電壓充電器充電，切勿使用超過DC5V或大於1.5A的快速充電器充電，可能會造成過熱或起火。
- 切勿將耳機暴露在溫度過高的地方或長時間受陽光直接照射。
- 產品的儲存溫度為10°C to 30°C
- 產品使用環境溫度為-20°C to 60°C
- 耳機長時間未使用的情況下，需充滿電再使用建議每3個月充電一次。

※ 建議新耳機在使用前先充滿電。

真誠為您服務

1. 產品使用過程中，有任何問題可隨時與我們聯繫，我們竭誠為您提供專業的售後服務。
2. 保固期內，屬產品本身原因引起的故障問題，我們將為您提供免費的維修服務。
3. 聯繫本公司時，請提供產品保固卡和訂單編號，以便於我們即時為您解決問題。

產品規格

CN

產品名稱: ENC降噪 TWS藍牙耳機
產品型號: Theta
藍牙版本: V5.3
輸入電壓: DC5V
電池容量: 30mAh*2/240mAh
BT 頻率: 2.402-2.480GHz
音頻頻率: 20Hz-20KHz
喇叭尺寸: Φ 13mm
阻 抗: $16 \Omega \pm 15\%$
傳輸範圍: 10m
靈 敏 度: 112dB \pm 3dB
使用時長: 約6小時
耳機充電時長: 約1小時

委製商資訊

代理商/進口商: 世雍國際股份有限公司
地址: 新北市新店區中正路四維巷二弄九號三樓
客服專線: (02)2219-2696
傳真專線: (02)2219-2927
製造日期: 2024年
製造地: 中國
製造商: 本產品由PAPAGO INC. 授權生產

產品保固

敬愛的客戶:

感謝您購買我司的產品，為提供優良的產品服務和維護您的消費權益，因此特制定保固條例，請您仔細閱讀並歡迎提出寶貴的意見和建議!

一、保固服務內容

- ①自購買產品日起，向用戶提供產品售後180天保固期。
- ②在產品保固期內，屬產品本體故障非人為之問題，請連同保固卡與購買憑據和經銷商取得聯繫，以享受免費維修權益。

二、以下情況不在保固範圍內

- ①超過保固有效期限 / 遺失保固卡 / 撕毀修改產品保固貼
- ②未按產品說明書正確操作而引起的商品損毀
- ③外觀有不正常磨損或將產品自行拆解處理
- ④經涉水、受潮、擠壓、跌落等人為造成之故障損壞
- ⑤不可抗力因素造成之商品損壞
- ⑥保固服務內容若有變更及修改,恕不另行告知。

三、該卡為產品保固卡，請認真填寫，並妥善保管。

四、本公司保留對本產品售後服務條例的解釋權。

取得實驗證明之低功率射頻器材，非經核准，公司、商號或使用者均不得擅自變更頻率、加大功率或變更原設計之特性及功能。低功率射頻器材之使用不得影響飛航安全及干擾合法通信；經發現有干擾現象時，應立即停用，並改善至無干擾時方得繼續使用。前述合法通信，指依電信管理法規作業之無線電通信。低功率射頻器材須符合合法通信或工業、科學及醫療用電波輻射性電機設備之干擾。

PAPAGO! 研動科技股份有限公司

產品保固卡

型號	TG11	購買日期	年	月	日
姓名	聯絡電話				
地址					
故障原因詳述:					
銷售店章	本產品提供 自購買日起 180天保固期 請務必詳閱產品保固說明 並請妥善填寫本卡及保存				

設備名稱: Equipment name	USB電源供應器					
型號(型式): Type designation (Type)	AC-DK46T+					
單元 Unit	限制物質及其化學符號 Restricted substances and its chemical symbols					
	鉛 Lead (Pb)	汞 Mercury (Hg)	鎘 Cadmium (Cd)	六價鉻 Hexavalent chromium (Cr ⁶⁺)	多溴聯苯 Polybrominated biphenyls (PBB)	多溴二苯醚 Polybrominated diphenyl ethers (PBDE)
塑膠外殼/ Plastic Enclosure	○	○	○	○	○	○
電路板/ PCB	○	○	○	○	○	○
雙面線圈/ Bobbin	○	○	○	○	○	○
銘牌(標籤)/ Label	○	○	○	○	○	○
插接器/ (Plug)	○	○	○	○	○	○
備考 1. “超出 0.1 wt %” 及 “超出 0.01 wt %” 係指該項物質之百分比含量超出百分比含量基準值。 Note 1: “Exceeding 0.1 wt %” and “Exceeding 0.01 wt %” indicate that the percentage content of the restricted substance exceeds the reference percentage value of presence condition. 備考 2. “○” 係指該項限制物質之百分比含量未超出百分比含量基準值。 Note 2: “○” indicates that the percentage content of the restricted substance does not exceed the percentage of reference value of presence condition. 備考 3. “—” 係指該項限制物質為排除項目。 Note 3: The “—” indicates that the restricted substance corresponds to the exemption.						